

# MARIJUANA POLICY—A CHANGING LANDSCAPE

---

AMY RONSHAUSEN  
EXECUTIVE DIRECTOR  
DRUG FREE AMERICA FOUNDATION, INC.



# GEORGIA

---

## GEORGIA

- 2014 Low-THC law - 20ozs of infused cannabis oils containing not more than 5%THC and an amount of CBD equal to or greater than the amount of THC "if such substance is in a pharmaceutical container labeled by the manufacturer indicating the % of THC" for treating AIDS, Alzheimer's disease, ALS, Autism, Cancer, Crohn's disease, Hospice care patients, Intractable Pain, Mitochondrial disease, MS, Parkinson's disease, PTSD, severe or end stage Peripheral neuropathy, Seizure disorder, Sickle cell disease, Tourette's syndrome.
- 2019- MMJ law, - llows for the purchase and sale, establishes a regulatory commission to oversee the eventual "production, manufacturing, and dispensing" of state-regulated medical marijuana products

# MARIJUANA POLICY IN OUR REGION

---

## FLORIDA

- 2014 Low THC law
- 2016 – Medical Marijuana ballot measure passed
- 2017 - Implementation of MMJ law
- 2019 – Hemp law passed
- 2020 – possible legalization ballot measure

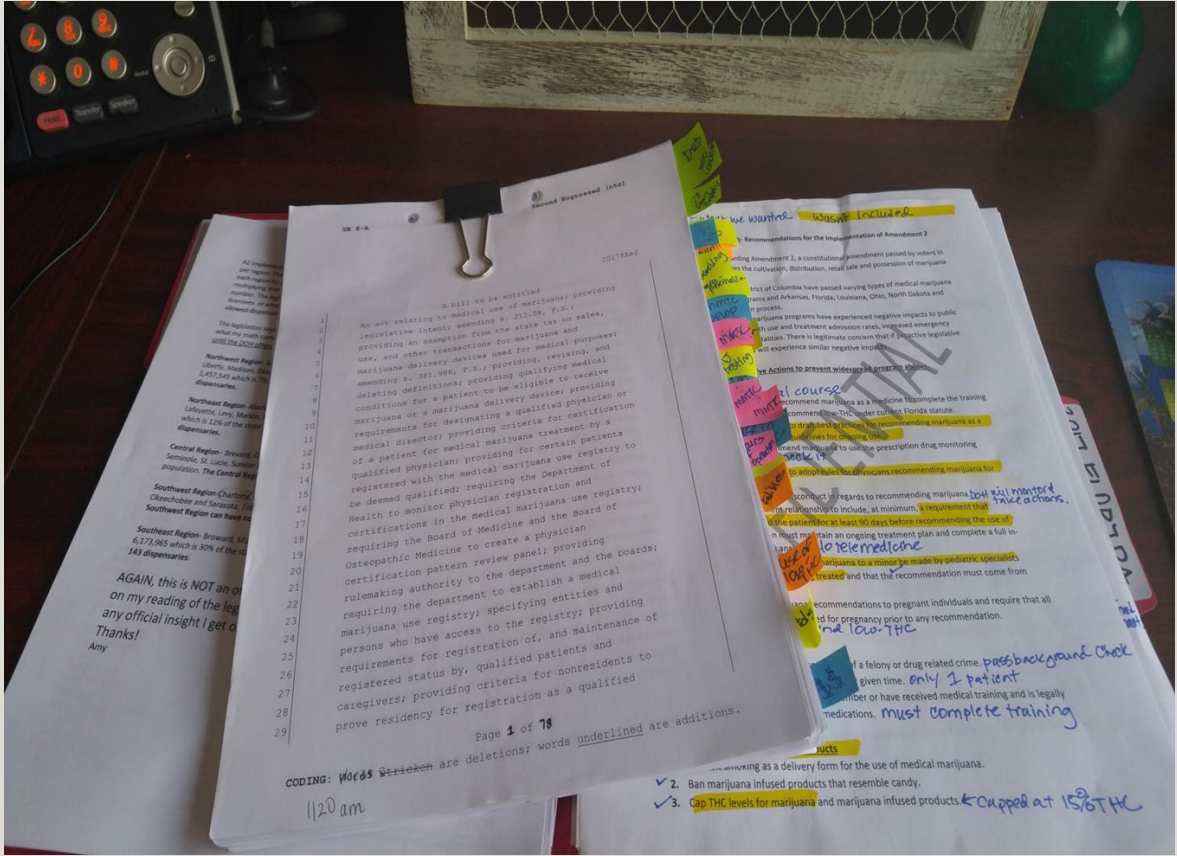


## 2017 LEGISLATIVE AND DOH ADVOCACY



- multiple trips to Tallahassee to meet with legislators and testify at committee hearing
- 29,870 advocacy messages to legislators supporting House bill.

# KNOW THE LAW!



# AREAS OF INTEREST

---

**Physicians**

**Dispensaries**

**Marijuana  
Products**

**Public  
Safety**

**Prevention**

# WHAT WE DIDN'T WANT



**MEDICAL MARIJUANA CARDS**

**LOWEST PRICE GUARANTEED!**  
(If you find a lower price we will match it)  
**FREE CONSULTATION! No Quality, No Pay!**

**1-888-4DOC-420**  
**doc420.com**

**DOC 420**  
SONA PATEL M.D.



**HIGH QUALITY PHOTO ID CARDS**

**Best Price Evaluations**

**WE MATCH ANY PRICE\***  
\*With Proof of Price

**\$35**

**RENEWAL FROM ANY DOCTOR**  
Non SELF INCRIMINATING medical forms

**Office Hours: 12pm - 7pm Mon - Sat**

**3 locations to serve you**

**GRAND OPENING SPECIAL**  
Canoga Park & Whittier Only  
\$25 Renewals from any Doctor  
\$42 New Patients

**Internet SUPER SPECIALS**  
(See Website)

**100% PRIVACY Guaranteed!**  
Call for ALL DAY PRIORITY APPOINTMENT: 24 min IN & OUT

**(877) 670-6338**  
6819 Sepulveda Blvd. Ste. #209  
Van Nuys, CA 91405

**(877) 670-6338**  
22148 Sherman Way, Ste #202  
Canoga Park, Ca. 91303

**(877) 670-6338**  
7200 Greenleaf Ave., Ste #370  
Whittier, Ca. 90602

**www.BestPriceEvaluations.com** facebook

## PHYSICIANS – ACCORDING TO SB 8

- No direct \indirect interest dispensary or lab.
- 2 hour annual course
- Exam while physically in same room
- < 18, second physician must concur
- **Only low-THC for pregnant patients**
- Review the PDMP for patients Rx history



# PHYSICIANS – ACCORDING TO SB 8

**Obtain a consent form**

**70 day supply, every 30 weeks**

**must include the amounts and forms of MJ authorized  
and the types of delivery devices needed**

**Record in the MMJ registry with in 7 days**

**Cant be smoked**

# WHAT WE GOT



**Marketing at music festivals**

All-Inclusive Pricing	
STANDARD PLAN	FINANCE PLAN
\$169 /7 Months	\$30 /Month
Full Medical Cannabis Recommendation (Low-THC/CBD + High - THC)	Full Medical Cannabis Recommendation (Low-THC/CBD + High - THC)
Money-Back Guarantee If You Don't Receive Recommendation	Money-Back Guarantee If You Don't Receive Recommendation
Includes Renewals every 70 days, up to State-Mandated Maximum of 7 Months	Includes Physicians Renewals Up to State-Mandated Maximum of 7 Months
All-Inclusive* No Hidden Fees	All-Inclusive* No Hidden Fees
	Financing option cannot be canceled until the initial 7- Month commitment is complete

We strive to be Florida's most affordable medical marijuana option. Patient access to medical cannabis is our #1 priority. Our physicians and staff are available to assist you.

# WHAT WE GOT

---



**When did we start determining medical need by “liking” illicit use?**

Unsolicited internet pop up ads appearing on Facebook, Twitter and Instagram.

Blimps appearing over Tampa Bay and our beautiful shorelines that are often packed with youth.

**Both of these types of advertising are prohibited by dispensaries under Florida law but not by physician groups.**



# WHAT WE GOT

---

A Tampa Bay Times examination of the 1,432 doctors in the program reveals **Florida's has turned into a magnet for physicians with troubled pasts.**

- 2.8 times as likely as other doctors to have been disciplined by the Board of Medicine
- 2.4 times as likely to have been charged with a crime
- 108 of them were responsible for \$69.4 million in malpractice judgments and settlements, some for maiming or killing patients.

<http://www.tampabay.com/investigations/2018/05/04/floridas-medical-marijuana-program-is-attracting-troubled-doctors-its-like-the-wild-wild-west/>

# WHAT WE GOT

---

## Doctor busted after doing medical marijuana exams via closed circuit TV, cops say



“Two men went to Pembroke Pines High Life Medical Marijuana Center on different days, each telling a doctor seen only on a computer monitor that he wanted a medical marijuana card so he’d have a legal excuse when workplace drug tests busted him.”

Source: <https://www.miamiherald.com/news/local/community/broward/article221716510.html>

# WHAT WE GOT

---



- 1,207 physicians had active medical-marijuana certifications during the six-month review period, but just 89 of them were responsible for 94,850 of certifications.

**7% of the physicians were responsible for 56% of the medical marijuana certifications.**

Source: <http://www.fox13news.com/news/florida-news/state-7-of-certified-doctors-responsible-for-56-of-medical-marijuana-certifications>

# WHAT WE GOT

---

- Lawsuit to allow smoked marijuana
  - Court found law to ban smoked marijuana was against voter intent
- Governor's ultimatum to legislature: come up with rules for smoking or state will drop the appeal
- Passage of bill to allow for the use of smoked marijuana as a medicine

# OUNCES OF SMOKED MMJ DISPENSED AUGUST 2-9, 2019

---

- Nov. 29<sup>th</sup>- Dec. 6, 2019 20,357.576 ounces of smoked marijuana dispensed in Florida via 205 dispensaries
  - 1 joint is approx. 0.33 grams of marijuana so 1 ounce of marijuana could roll approx. 85 joints.
  - 20,357 ounces of marijuana could be 1,730,345 joints.



Source: [https://s27415.pcdn.co/wp-content/uploads/ommu\\_updates/2019/120619-OMMU-Update.pdf](https://s27415.pcdn.co/wp-content/uploads/ommu_updates/2019/120619-OMMU-Update.pdf)



# PHYSICIANS – AREAS OF ADVOCACY

---

- Require Board of Medicine to adopt rules for physicians recommending marijuana for pain
- Require the Surgeon General to draft best practices for recommending MMJ as well as standard of care guidelines for ongoing use
- Ban/Restrict smoking and vaping
- Look at one modality of care model
- **Restrict marketing and advertising**



Let us help you,  
Today!

MEDCAN



shopmedmen

MedMen



Trulieve

Dear Syringe  
Hybrid

uieve  
RECALL  
PRODUCE

Bak

Dear Syringe  
Bak

Hybrid  
Leg

770.0 mg THC, 60.0 mg CBD,  
99.2 mg THCA, 2.5 mg CBG,  
8.8 mg CBN, 0.0 mg CBN,  
0.4 mg THY, 0.2 mg TPA

# DISPENSARIES - WHAT WE DIDN'T WANT



# WHAT WE DIDN'T WANT



# DISPENSARIES AND CULTIVATION IN OTHER STATES

---

- Oregon
  - 18,099 grow sites for 45,210 patients
- Colorado
  - 495 MMJ Centers
  - 725 MMJ Cultivation licenses
- California
  - 2,756 dispensaries



Source: <https://mjbizdaily.com/chart-latest-california-marijuana-market-data-845m-annual-sales-2756-dispensaries/> Colorado Department of Revenue  
<https://www.colorado.gov/pacific/enforcement/med-resources-and-statistics> Oregon  
[https://www.oregon.gov/oha/PH/DISEASES/CONDITIONS/CHRONICDISEASE/MEDICALMARIJUANAPROGRAM/Documents/ed-materials/OMMP%20Statistic%20Snapshot%20-%202004-2018\\_Final.pdf](https://www.oregon.gov/oha/PH/DISEASES/CONDITIONS/CHRONICDISEASE/MEDICALMARIJUANAPROGRAM/Documents/ed-materials/OMMP%20Statistic%20Snapshot%20-%202004-2018_Final.pdf)

# WHY WE CARE ABOUT THE NUMBERS

---

- Past month use is higher in states that allow distribution of medical marijuana through store front dispensaries.
- The density of local dispensaries is associated with a greater number of hospitalizations with a primary or secondary marijuana abuse/dependence code.
  - **An additional 1 dispensary per sq. mile in a zip code was associated with a 6.8% increase in the number of hospitalizations with a mj abuse/dependence code.**

Sources: Pacula, RL.; Powell, D.; Heaton, P.; Sevigny, EL. Assessing The Effects Of Medical Marijuana Laws On Marijuana And Alcohol Use: The Devil Is In The Details. Cambridge, MA: National Bureau of Economics Working Paper Series; 2013. Christina Maira, Bridget Freisthler, William R. Ponicki, and Andrew Gaidus. The impacts of marijuana dispensary density and neighborhood ecology on marijuana abuse and dependence. Drug Alcohol Depend. 2015 September 1; 154: 111–116. doi:10.1016/j.drugalcdep.2015.06.019

# DISPENSARIES – ACCORDING TO SB 8

---

## Cultivation and Dispensaries

- 17 cultivation centers in the state. After 100,000 registered patients issue another 4 and 4 more each time another 100,000 is reached. **We are now allowed 33 cultivation centers.**
- Each licensee can operate up to 25 dispensaries. Upon reaching the 100,000 threshold another 5. **Cap expires in 2020. They can now have 35 each.**
- **1,155 dispensaries allowed to operate in the state**

# DISPENSARIES – ACCORDING TO SB 8

---

**Employees 21 or older & pass a background check**

**Trained on legal dispensing requirements**

**edibles = permit to operate as a food establishment**

**May not display products in the waiting area**

**24 hour delivery but cannot dispense from MMTC premise  
between the hours of 9pm and 7am**

**Implement a DFWP policy**



# WHAT HAPPENS WITHOUT REGULATIONS?

Of the 346 highway interdiction seizures in 2016, there were 36 different states destined to receive marijuana from CO. Most common destinations identified were Illinois, Missouri, Texas, Kansas and Florida.

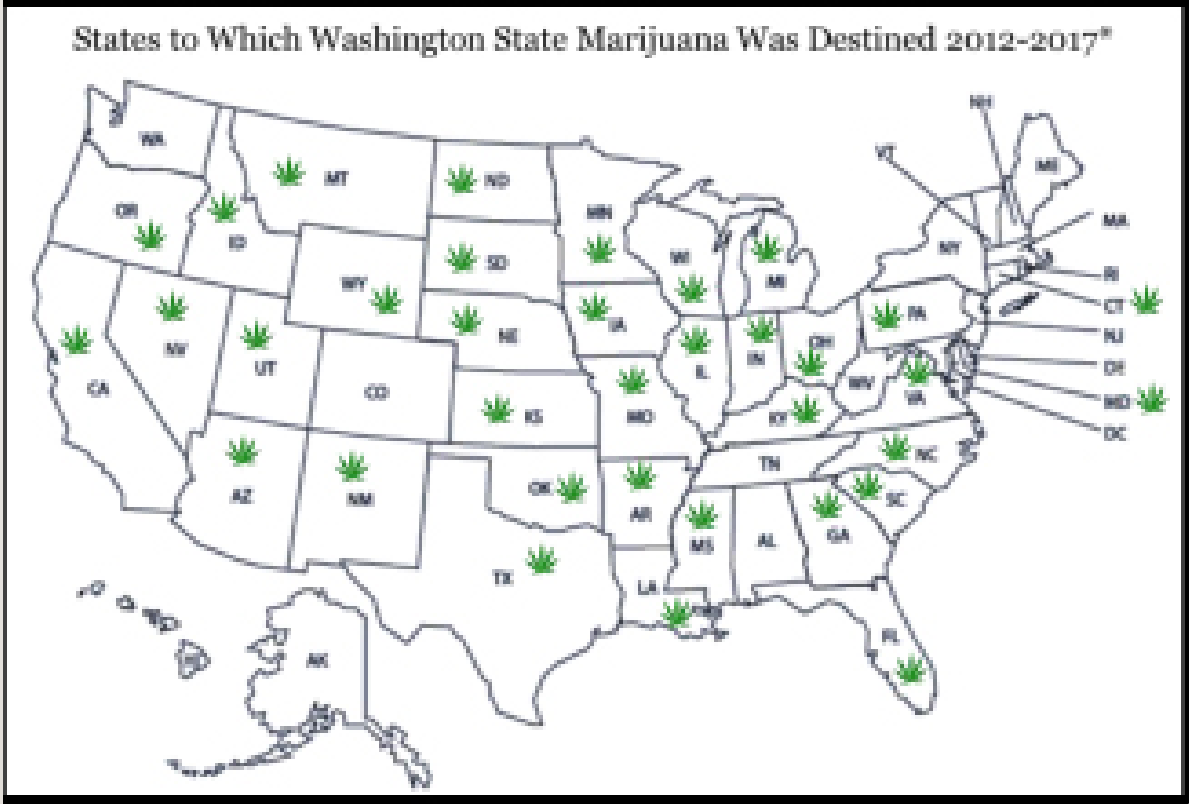
States to which Colorado Marijuana was Destined, 2016  
(Total Reported Incidents per State)



Source: RM HIDTA The Legalization of Marijuana: The Impacts Vol 5 October 2017 Accessed online at <https://rmhidta.org/files/D2DF/2017%20Legalization%20of%20Marijuana%20in%20Colorado%20The%20Impact2.pdf> April 2018

# WHAT HAPPENS WITHOUT REGULATION?

From legalization in 2012 through the first three months of 2017, seized marijuana from WA was found to be destined for 38 other states (80% of the US)



Source: NWHIDTA Marijuana Impact Report 2017

# WHAT WE DIDN'T WANT



# MJ PRODUCTS – ACCORDING TO SB 8

---

**No more than 200 mgs of THC, single serving no more than 10mgs**

**THC potency limit of 15%**

**Cannot be attractive to kids**

**Individually sealed in plain opaque wrapping marked only with the MJ universal symbol.**

# MJ PRODUCTS – A2

---

## MJ Products and Edibles

- Packaged in compliance with the US Poison Prevent. Act
- Labeling to include:
  - MMTC, batch and harvest #, date dispensed, recommending physician, patient name, product name (cant be associated with products marketed to kids) and dosing form, recommended dose, warning label that is illegal to transfer, and universal symbol.
- On edibles, a warning to keep away from kids
- Product Insert include:
  - Clinical pharmacology, indications and use, dosage and administration, dosage forms and strengths, contradictions, warnings and precautions and adverse reactions.

# WHAT WE GOT



# WHY WE CARE ABOUT MMJ PRODUCTS

---

- National Poison Data System from 2005 to 2011
  - Decriminalization was associated with
    - increased reports of unintentional exposures in young children.
    - 30% increase per year of MJ related call to poison control
    - transitioning to decriminalization had an average increase of 11.5% per year.
  - MJ-related calls to poison control centers in non-legal states showed an average increase of only 1.5% per year from 2005 to 2011

Source: Wang GS, Roosevelt G, Le Lait MC, Martinez EM, Bucher-Bartelson B, Bronstein AC, Heard K. Association of unintentional pediatric exposures with decriminalization of marijuana in the United States. *Annals of Emergency Medicine*. 2014;63(6):684–689. <http://dx.doi.org/10.1016/j.annemergmed.2014.01.017>.

# WHY WE CARE ABOUT MJ PRODUCTS

---

- Use of edibles is more prevalent in medical marijuana states, particularly those more dispensaries per capita.
- 29.8 % of adults who had ever used marijuana reported consuming it in edible or beverage form.



# PUBLIC SAFETY – ACCORDING TO SB 8

---

- Cannot use MMJ in plain view of or in a place open to the general public, in a school bus, vehicle, aircraft, boat, or on the grounds of a school (EXCEPT FOR LOW-THC)
- MMJ law does not exempt a person from prosecution for an offense related to impairment or intoxication resulting from the medical use of marijuana.
- Does not limit the ability of an employer to establish , continue, or enforce a drug free workplace program or policy. **This section does not require an employer to accommodate the medical use of marijuana in any workplace or any employee working while under the influence of marijuana. This section does not create a cause of action against an employer for wrongful discharge or discrimination**

# PREVENTION – ACCORDING TO SB 8

---

## WHAT WE WERE ABLE TO GET IN THE FL LAW

- **\$500,000** (nonrecurring from General Revenue Fund) to DOH to implement a “statewide cannabis and marijuana education and illicit use prevention campaign.”
- **\$100,000** (recurring funds) to train additional law enforcement officers as DREs.
- **\$750,000** (nonrecurring from General fund) to the Coalition for Medicinal Cannabis Research and Education at Moffitt to conduct medical marijuana research.

# PREVENTION- WHAT WE GOT

---

- **\$5 million** (nonrecurring from the HWY Safety Operating Trust Fund) to Dept. of Hwy Safety & Motor Vehicles to implement a statewide impaired driving education campaign.



# AREAS OF ADVOCACY

---

## **Public Safety**

- Adopt open container law for MJ like alcohol
- Possession at Colleges and Universities?
- Expand distance from schools from 500ft to 1500ft

## **Dispensaries**

- Allow for local control on zoning
- Single state approved logo
- Remove automatic expansions (proof of need)

## **Prevention and Education**

- Recurring state funds for prevention campaign.



# WHERE DOES PREVENTION FIT?

---



# WHAT WE NEED - COLLECTION OF DATA

---

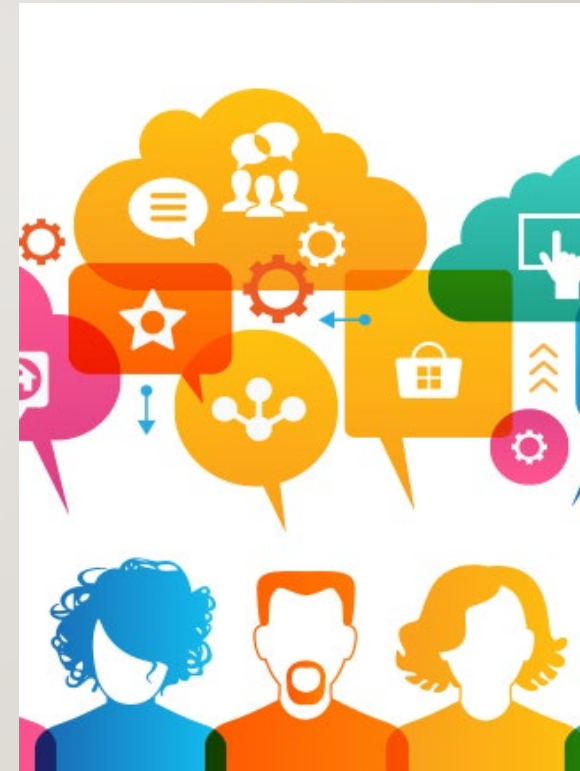
- How will/do marijuana laws impact
  - Traffic fatalities
  - Workplace accidents
  - School suspensions and expulsions
  - Treatment admission rates
  - Youth use rates
  - Water and electricity consumption



# PRESENT AND SHARE THE DATA

---

- Educational forums
- One pagers
- Infographics
- Policy papers
- Social media



# IMPACTS TO PREVENTION WORK

Change Access/Barriers	Who will do what? By when?	Resources Needed	Who Should Know?
<b>A. Restrict edibles, marketing, THC content</b>	provide information to legislators during session.	Legislative information from other states with similar laws, known community impacts of such laws	all members of the legislature, policy decision makers and influences



# GET YOUR MEDICAL MARIJUANA CARD

Florida now Allows medical use of marijuana for individuals with debilitating medical conditions as determined by a licensed Florida physician. a few conditions are listed:



- Cancer
- Epilepsy
- Glaucoma
- HIV
- AIDS
- Post-traumatic stress disorder (PTSD)
- Amyotrophic lateral sclerosis
- Crohn's disease
- Parkinson's disease
- Multiple sclerosis

GET THE HELP YOU DESERVE  
CALL TODAY 954-326-0114  
SERVING ALL SOUTH FLORIDA



# ADDICTION

---



9% of people who  
try marijuana  
become addicted

17% (1 in 6) for  
those who start  
using in their teens



20-50% for daily  
users

# IMPACTS TO PREVENTION WORK

---

<b>Change Access/Barriers</b>	<b>Who will do what? By when?</b>	<b>Resources Needed</b>	<b>Who Should Know?</b>
<b>B. Dispensary bans or zoning restrictions</b>	Volunteers will meet with local government members and testify at designated hearings	Data on the community impacts related to dispensaries, volunteers to testify and write letters	Local lawmakers, policy decision makers and influences

# IMPACTS TO PREVENTION WORK

---

- Know what your surrounding counties and cities are doing
  - Is your lack of action putting you at risk for being the only available real estate left for dispensaries?
    - Track ordinances, provide models, search media, keep a running list of local government action

# DFAF RESOURCES THAT YOU CAN CO-BRAND FOR FREE

https://www.dfaf.org/wp-content/uploads/2018/08/MJ-in-Workplace\_85x11.pdf

## MARIJUANA AND THE WORKPLACE

**THE THC LEVEL** in 1960s era marijuana was around 1%. Today's marijuana averages 18.7% THC, with some samples in the upper 20%-30% range.<sup>2</sup> Today, hash oil extracts average more than 50% THC with some samples exceeding 80%.<sup>2</sup>

**8.9% OF PAST MONTH MARIJUANA USERS** were employed full-time, 10.6% were employed part-time and 14.7% were unemployed.<sup>1</sup>

**ONE STUDY FOUND** that marijuana users had 85% more injuries at work than non-users.<sup>4</sup>

**MARIJUANA IS NOT CONSIDERED** an effective medical treatment, therefore it is not covered under workers compensation guidelines.<sup>5</sup>


**POTENT MARIJUANA EXTRACTS** are used in vaping or in a variety of everyday foods such as snacks, candies, and drinks, making it easy to consume pot in the workplace without being detected.

**POSITIVE WORKPLACE** urine drug tests in legal marijuana states outpaced the national average of 4%. Colorado increased 11% and Washington increased 9%.<sup>4</sup>

**DRIVERS THAT TEST POSITIVE FOR MARIJUANA** are more than twice as likely as other drivers to be involved in a collision, and three to seven times more likely to have caused the crash.<sup>7</sup>

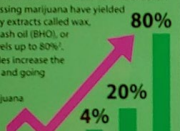
**OSHA TELLS EMPLOYERS** they must provide a work environment that "is free from recognizable hazards that are causing or likely to cause serious harm. Because of marijuana's effects on the brain and behavior, it may be construed that not fulfilling their responsibility to hire or retain an employee who uses, be it for medical or recreational purposes, is not fulfilling their responsibility to provide a safe work environment."<sup>8</sup>

**IN THE U.S., 47 jurisdictions** have enacted workers compensation laws that restrict marijuana use. In some states, the use of marijuana or alcohol are presumed to be the cause of an injury.




## Marijuana: Know the Truth Impacts of Legalization

**Marijuana Potency**  
Marijuana potency has risen from 4% in 1995 to 20% in 2015.<sup>1</sup> New methods of processing marijuana have yielded extremely high potency extracts called wax, shatter, dabs, butane hash oil (BHO), or honey oil, with THC levels up to 80%.<sup>2</sup> Potent marijuana edibles increase the chance of THC poisoning and going to the ER.<sup>3</sup> In 2018 vaping of marijuana has increased across grades 8th-10th.<sup>4</sup>




**Addiction**  
• 9% of people who try marijuana become addicted.<sup>5, 6, 7</sup>  
• Marijuana addiction is 17% (or 1 in 6) for those who start using as a teen.<sup>6, 7</sup>  
• 20-50% of daily marijuana users become addicted.<sup>6, 7</sup>

**Physical Health Effects**  
• Like tobacco, marijuana smoke irritates the lungs causing breathing difficulties, chronic coughing, bronchitis, and pneumonia.<sup>8</sup>  
• Marijuana use nearly doubles the risk of testicular cancer.<sup>9</sup>



**Mental Health Effects**  
Marijuana stimulates the brain causing altered thinking, memory, brain development, hallucinations, and psychosis.<sup>10</sup> Adolescents with heavy marijuana use lose an average of 8-10 IQ points.<sup>11</sup> People with mental illness suffer an increase in depressed mood and anxiety when they use marijuana.<sup>12</sup> Marijuana induces anxiety, psychosis, and schizophrenia in those with no mental illness.<sup>13</sup> Youth who used marijuana 3 times or more by age 16 were more likely to have a depressive disorder at age 26.<sup>14</sup> Marijuana use was significantly associated with worse recovery for depression and anxiety symptoms and mental health functioning compared with patients not using marijuana.<sup>15</sup> Daily adolescent users were 18 times more likely to become dependent on marijuana, 7 times more likely to attempt suicide and 8 times more likely to use other (illegal) drugs in the future.<sup>16</sup> People smoking marijuana before age 17 were 3.5 times more likely to attempt suicide than those who started smoking marijuana later in life.<sup>17</sup>



**Marijuana and Opioid Use Vulnerability**  
• 90% of all addictions start in adolescence.<sup>18</sup>  
• There is little evidence that marijuana reduces pain or the use of opioids.<sup>19</sup>  
• Marijuana use increases the likelihood of opioid dependence.<sup>20</sup>

## Marijuana Use During Pregnancy

**One in twenty five women** report smoking marijuana during pregnancy.<sup>1</sup>

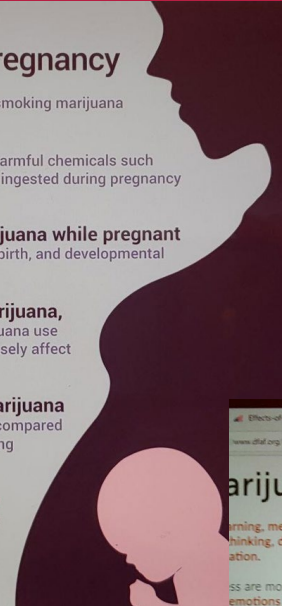
**Infused products** may contain harmful chemicals such as pesticides and neurotoxins, that when ingested during pregnancy could harm the baby.<sup>2</sup>

**Research shows that using marijuana while pregnant** can result in low birth weight, premature birth, and developmental problems in newborns.<sup>3</sup>

**THC, the active ingredient in marijuana,** can be passed through breast milk. Marijuana use during pregnancy and lactation can adversely affect neurodevelopment in the child.<sup>4</sup>

**Pregnant women who smoke marijuana** are 3 more times the risk of stillbirth compared to women who do not use marijuana during pregnancy.<sup>5</sup>

**Marijuana use during pregnancy** can have subtle effects on brain functioning of infants such as deficits in regulatory and sleeping, irritability, attention, and increased startle response in newborns.<sup>6</sup>



## Marijuana: Impacts to Mental Health

Marijuana can cause the loss of a sense of personal identity.<sup>1</sup>

Marijuana use can increase the risk of panic disorder and anxiety.<sup>2</sup>

Heavy marijuana use is associated with increased rates of PTSD.<sup>3</sup>

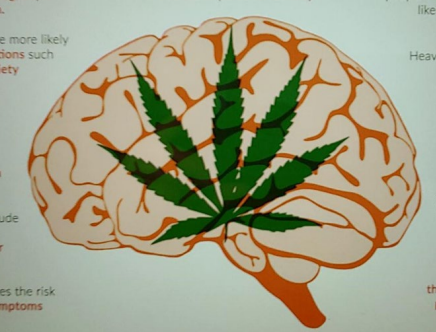
Marijuana use is associated with increased rates of depression and anxiety.<sup>4</sup>

Daily marijuana use is associated with lower academic achievement.<sup>5</sup>

Long-term marijuana use is associated with poor school performance.<sup>6</sup>

Using marijuana doubles a teen's risk of developing depression and anxiety.<sup>7</sup>

Frequent marijuana use is associated with major depressive disorder.<sup>8</sup>



# MARIJUANA KNOW THE TRUTH



- 30 second movie theater ad ran for 10 weeks in 22 states
  - 13 million impressions
- In lobby ads
  - 11 million impressions
- Cross-platform digital campaign for 5 weeks
  - 55 million impressions

# MJ KNOW THE TRUTH TELLY AWARD FOR SOCIAL RESPONSIBILITY

---



# ADDITIONAL RESOURCES

---



**Amy Ronshausen**  
**aronshauen@dfaf.org**

- [www.dfaf.org](http://www.dfaf.org)
- [marijuanaharmlessthinkagain.org](http://marijuanaharmlessthinkagain.org)
- [learnaboutsam.org](http://learnaboutsam.org)
- [nationalfamilies.org](http://nationalfamilies.org)
- [No2Pot.org](http://No2Pot.org)
- [Rmhidta.org](http://Rmhidta.org)